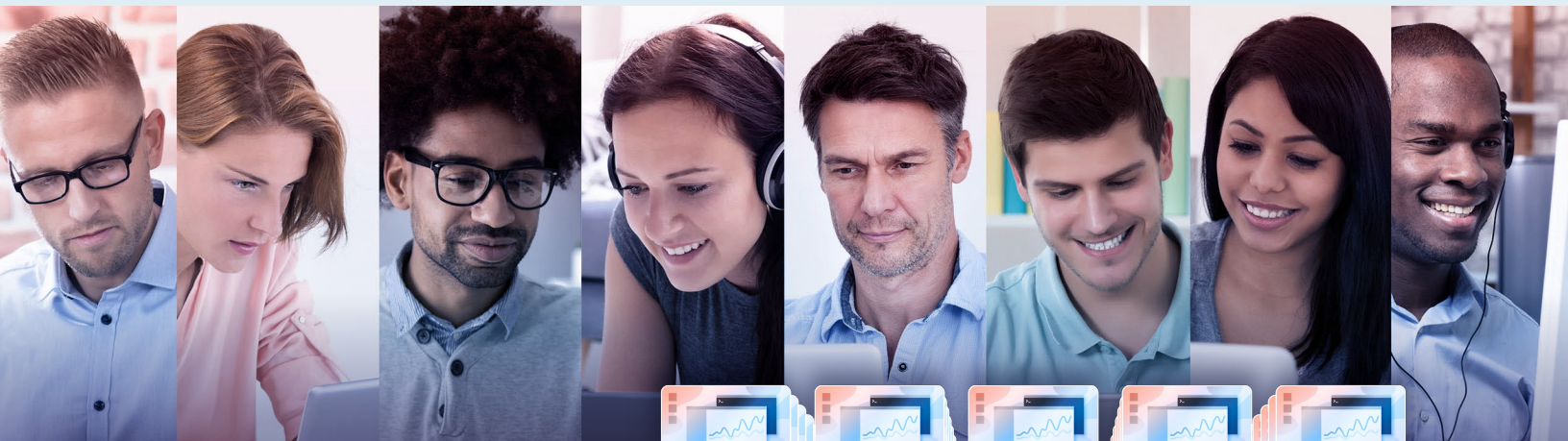


Keep remote desktop power users productive with Dell EMC PowerEdge R840 servers powered by 2nd Gen Intel Xeon Scalable processors

When the Dell EMC™ PowerEdge™ R840 launched, we found that companies could get more power for their CPU-intensive workloads with this 2U four-socket rack server.¹ Now, it presents an opportunity for you to support more power users, speed desktop responsiveness, and grow your employee base.



Proven performance without slowdowns

In our hands-on testing, the Dell EMC PowerEdge R840 server with Intel® processors supported

230

VDI power users

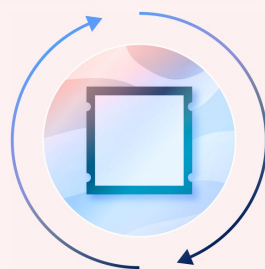
while maintaining acceptable desktop response times.



Speedy access to applications

Imagine hundreds of power users simultaneously working on reports, checking email, and collaborating with one another—this barrage of activities can bog down lesser servers.

We found that the PowerEdge R840 delivered acceptable response times (<1 second for CPU-centric tasks and <6 seconds for storage-centric tasks).²



95th percentile response times:
0.82 seconds
on CPU-centric tasks



95th percentile response times:
5.98 seconds
on storage-centric tasks

The ability to support many VDI power users while maintaining acceptable response times means you can keep your workforce productive with fewer servers.

Learn more at <https://facts.pt/tm9232G>

1 Principled Technologies, "Get more power for your CPU-intensive workloads," accessed January 31, 2022, https://www.principledtechnologies.com/Dell/PowerEdge_R840_R820_comparison_0618.pdf.

2 Because many virtual users were working at once, we focused on a common performance measure: how long 95 percent of the applications running took to respond. This approach provides you with a much more accurate picture of expected response times.