

# OPTIMIZE DATABASE PERFORMANCE

DELL™ POWEREDGE™ R930 SERVER POWERED BY SAMSUNG NVMe PCIe SSDs

Upgrading your Oracle® database server with faster drives has the potential to benefit your company by:



lowering database response time and/or supporting more users



speeding rebuild times in case of a database crash



reducing database maintenance time



increasing user satisfaction



lowering costs as you eliminate under-performing hardware

13.9X

the performance with 8 Samsung NVMe PCIe SSDs\*



9.5X

the performance with 12 SAS hard disk drives, 10 SAS SSDs, and a common caching solution\*

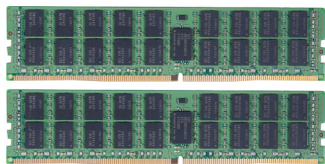
7.9X

the performance with 22 SAS SSDs\*

Dell PowerEdge R930 with 22 SAS hard drives

\*While running an Oracle database workload

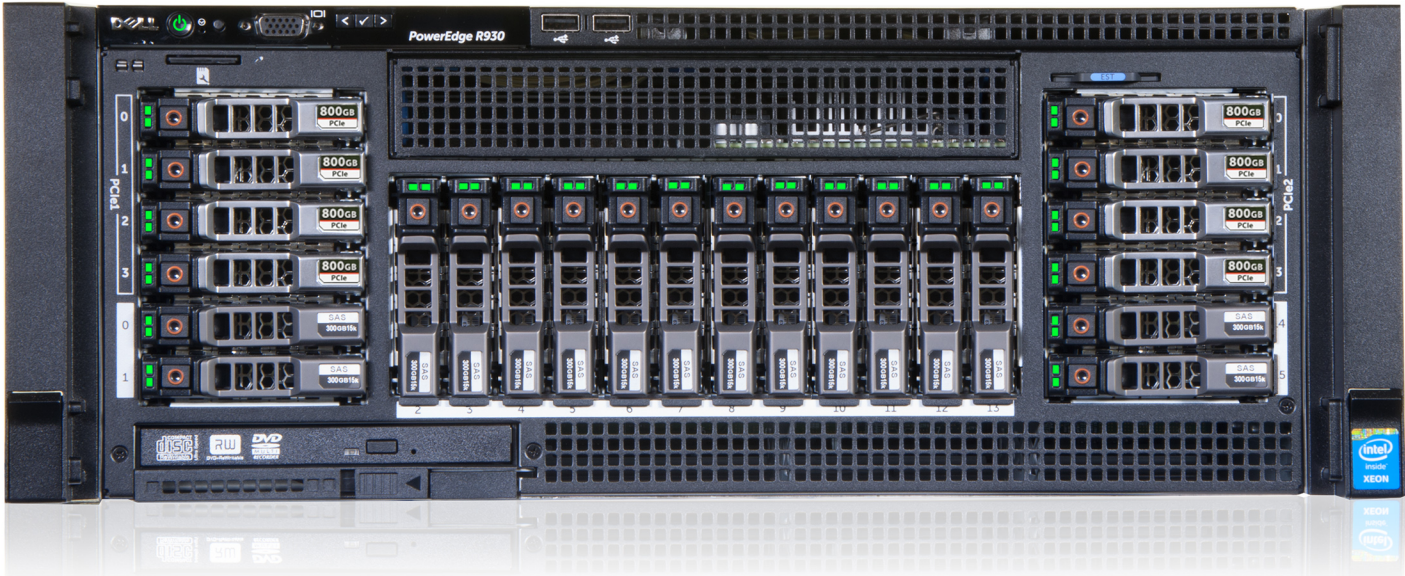
Operations per minute



Samsung DDR4 memory



Samsung NVMe PCIe SSD



Get all the facts at <http://facts.pt/1czZV04>