

Accelerate I/O with NVMe drives on the new Dell EMC PowerEdge R650 server

A new RAID controller that supports NVMe™ SSDs helped the server deliver up to 15 times the input/output operations per second (IOPS) of a previous-generation server



How upgrading to the next-gen Dell EMC™ PowerEdge™ R650 servers from current-gen Dell EMC PowerEdge R640 servers could help your organization

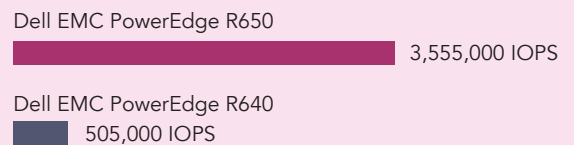


1

See potential performance gains for I/O-intensive applications in many I/O profiles.

IOPS - RAID 10 *Higher is better*

4KB random read

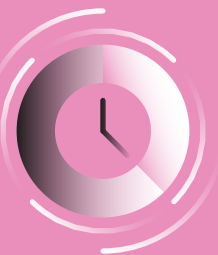
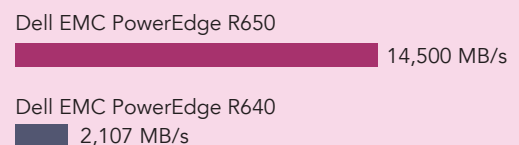


2

Process more data for large data requests such as streaming video or big data applications.

Disk bandwidth - RAID 5 *Higher is better*

4KB random read



3

Help improve latency and contribute to a positive user experience.

Latency - RAID 6 *Lower is better*

4KB random write



Learn more at <http://facts.pt/qvST5X5>